



## PANEL DISCUSSION

# Package, modular & containerised treatment panel questions for Famsystem Technologies:

**FAMSYSTEM  
TECHNOLOGY**  
www.famsys.co.za



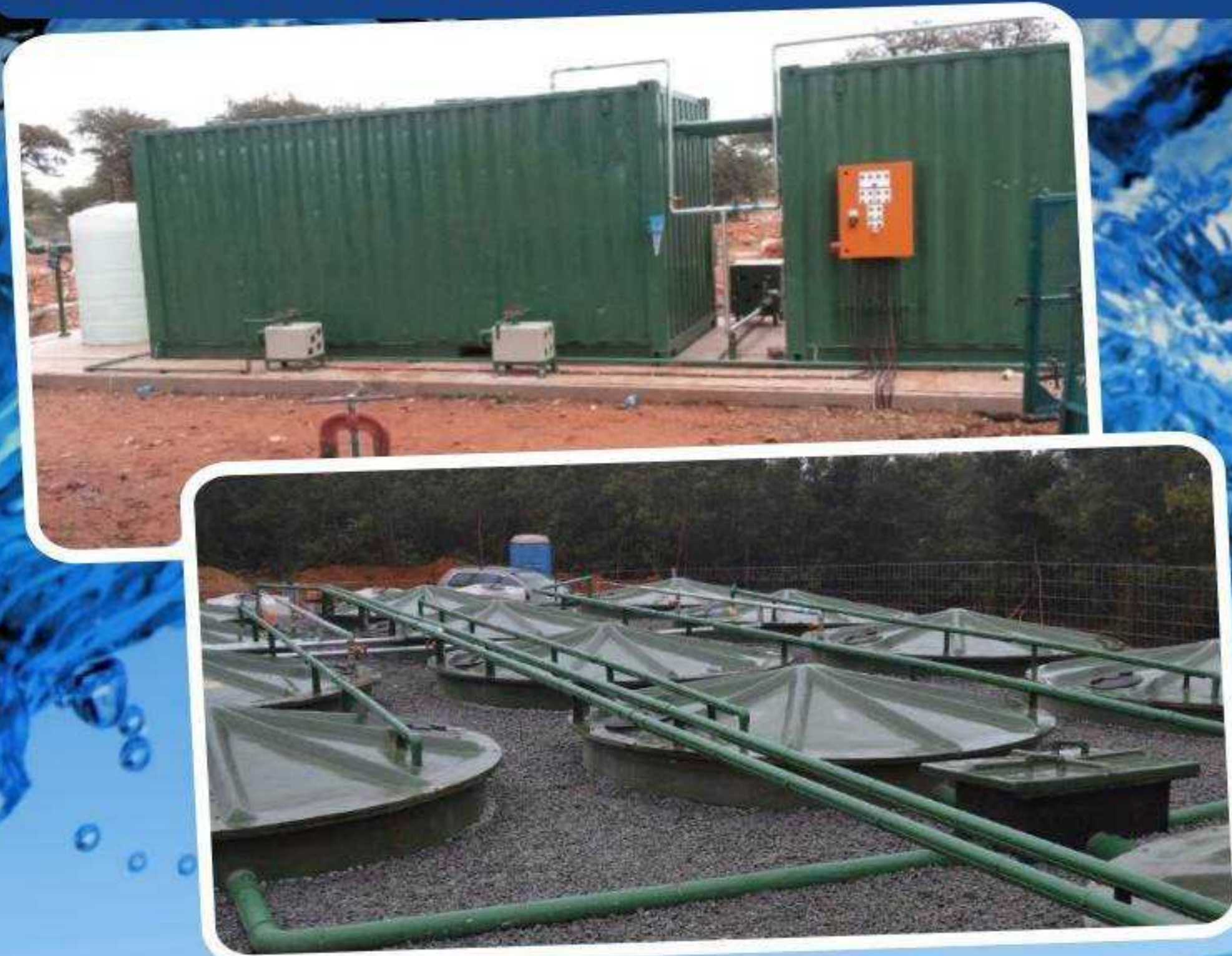
**Juan van Kerckhoven**

B.Sc. (Chem.Eng.), B.Comm

CEO of Famsystem Tech

**What products technological solutions do you offer for sewage treatment in rural or urban areas?**

Famsystem Technology offers small to medium waste water treatment plants for applications from a household to about 2 mega litres per day in both rural or urban areas .



We specialise in Fiberglass Tanks but also work in HDPE according to the Client Budgets. Fiberglass is Strong & long-lasting: Pound for Pound fiberglass is stronger than sheet metal. Fiberglass has a high resistance to corrosion & will not rust & with its UV resistant coat ensures our Plants longevity in the African Sun.

Our Technology is based on the activated sludge system which uses nature to biologically treat the sewage to general and special standards without the aid of chemicals or supplying bacteria.

Our Design & Technology has been perfected over the years & have hundreds of plants all over South Africa & Africa.

**What type of applications can they be used for? (Housing estates? Mines? Construction sites? Municipal?)**

Over the years our main applications have been housing estate where no central sewage system is available or new outlying facilities in terms of schools, hotels, mines etc.

Recently construction sites are required to treat their sewage effluent as well & this has become a main area of application

**What sets your offering apart from the rest? (Flexibility? Transport?)**

Our designs are completely flexible & although we do not change our basic technology, we offer solutions which are

Besides the normal process requirements we can package the plant into a system that takes into account its position, transport costs as well as flexibility high often requires the use of a containerised solution.

**How do your solutions reduce clients' operational costs and deliver the best**

Firstly our designs have proven to operate at the same efficiency for long period of time. We have plants operating over 20

Secondly by choosing the correct format of the plant we can offer the optimum solution for each case. This is done in order to reduce the total capital cost without compromising long term stability and quality.

**What are turnaround times like & what kind of after-sales service do you**

Completion of plants is dependent on many factors including the size, factory loading etc. Special deliveries can however be negotiate to accommodate site or project requirements